



Always in Play™

www.stormtowel.com



USA
2024

Premiumisation



Premiumisation is driving growth across categories

Non-Golf



Premiumization



BBQ's



TV's



Bikes

Golf



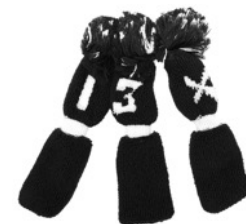
Premiumization



Drivers



Putters



Headcovers

Premiumisation



Key categories used every day by golfers:

Quality, Function, Durability & Price ↑

Golf



Market Gap

Premiumisation

Premiumisation



Drivers

Putters

Headcovers

Towels



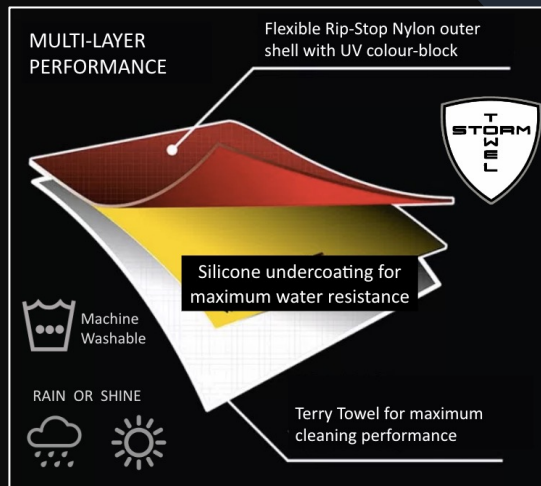
Always in Play[™]

USE WITH ANY GOLF BAG

Whether it's a casual weekend round with friends or the final round of the club championship, STORM TOWEL is built tough to perform under all playing conditions. Use the plush 100% cotton terry towel inner side to wipe grooves clean after you flush your approach into a tucked pin. When the skies threaten, just flop STORM TOWEL over the top of your bag for instant protection for your clubs from a sudden down-pour or a steady all-day rain, shielded by its durable rip-stop nylon shell with NEW silicone undercoating for maximum water resistance. No snaps or zippers to fuss with, and fully machine-washable. Simple and easy.



PLAYER'S TOWEL



WATER PROOF RAIN HOOD

**OUTSTANDING
CORPORATE
MARKETING
BILLBOARD**





Your
Logo Here



**TOP-SELLING
T-GIFT (Pg 54)**

Always in Play™



NEW 2024

NEW! 2024
Price Savings

Water-Proof
Shell with New
Silicone
Undercoating



Stainless
Steel Grommet
compatible
with any Golf
Bag

NEW! Black
Interior Terry
Towel for
stain-free
visuals

ST211 Storm Towel 2.0 | Black/Black



ST212 Storm Towel 2.0
Grey/Black



ST216 Storm Towel 2.0
White/Black



ST213 Storm Towel 2.0
Navy/Black

SEATTLE
REDHAWKS

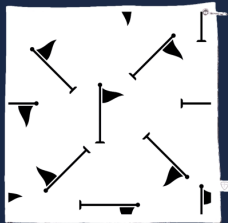


HATHWAY
STEWART
MADE IN CANADA

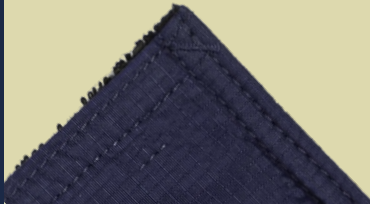


*Always*TM
in Play

Three weather icons are positioned below the text: a sun, a sun partially covered by a cloud, and a sun with rain falling from it.



UV-Coated Triple Stitching



Super-strong Marine-Grade Stainless-Steel Components



Outstanding Marketing Billboard

ALL-WEATHER

ULTRA-LIGHT CUSTOM HEAD
COVERS

Always[™]
in Play



by STORM TOWEL



Always in Play™
☀️ ☁️ ☔️

**60% LIGHTER
THAN LEATHER
HEAD COVERS**

AVAILABLE IN:
DRIVER, FAIRWAY HYBRID

**FLEXIBLE CUSTOMIZATION TO
CELEBRATE YOUR BRAND**

Multi-layer STORM TOWEL HEADCOVERS are built tough for the realities of golf. Constructed with STORM TOWEL fabrics, its water-resistant Rip-stop nylon shell with water-blocking silicone under-layer is made to hit the ground as you make the trek back to the tee deck on dew-laden mornings. Meanwhile, the cotton terry towel inner side cloaks your most expensive clubs in softness to keep club heads looking new from round to round.

Triple-stitched with UV-protected thread, STORM COVER head covers are designed to withstand all the on-off cycles of a grinding round, regardless of the challenges the day may bring forth. Plus, they're fully machine washable...so no need to fear the ground!



TERRY TOWEL INTERIOR



WATER RESISTANT SHELL





Always in Play™
☀️ ☁️ ☔️

NEW 2024



SC212D/F/H Storm Cover 2.0
Grey/Black



SC216D/F/H Storm Cover 2.0
Grey/Black



FLEXIBLE DESIGN OPTIONS!



SC211D/F/H Storm Cover 2.0
Black/Black



SC213D/F/H Storm Cover 2.0
Grey/Black





Lifestyle Products for Golfers



HATHWAY STEWART

Luxury Golf & Lifestyle Products

Classic Product
Styles with Added
Functionality

**Crafted Using
Premium Recycled
Fabrics**

Design with RFID
Technology for added
cyber security



New for 2024

Experience the ultimate in premium lifestyle products with Hathway Stewart, a fresh new golf & lifestyle brand for upscale Golf & Country Clubs. Our products offer tasteful decoration and customization space, allowing you to showcase your club's distinct branding. Our new 2024 collection offers a range of stylish purses and backpacks, each designed with the utmost care and attention to detail.

With Hathway Stewart, you can delight your most discerning members and customers. Experience the ultimate in quality, service, and speed with our distinguished new offerings.



Coming Soon for 2024



Customizable
Ladies Backpacks



Customizable
Ladies Golf Purse

3-IN-1 Crossbody Purse

For Golfers



NEW
2024



For everyday use, wear it crossbody or use the wristlet strap to change up your look

When the course is calling, simply clip it to your golf bag to keep your valuables close with no changeover!



Stylish, Water Resistant
Recycled Vegan Leather
Exterior

Interior Zipper Pocket &
Convenient Key Clip



RFID lined pockets, placing a protective barrier between your technology and any unauthorized identity readers



Adjustable and Removeable Shoulder Strap

3-in-1

Ladies Crossbody Purse *For Golfers*

Fashion Meets Function

Introducing your new accessory that is specifically designed for the female golfer for both on and off the course. For everyday wear, pair this purse staple with your favorite going out attire. When the course is calling, simply unclip the removeable strap and attach the purse to your golf bag. No transfer of personal items needed – its ready when you are.

Unit Dimensions:
8" W x 5" H x 2.75" D

NEW!
SOFT PINK
AVAILABLE
JUNE 2024



HSCP106 | Soft Pink



HSCP101 | Black



HSCP104 | Ivory

The PERFECT Tournament Gift

NEW
2024



Additional
personalization
position, perfect
for Initials!



Fairway Femme BACKPACK

Introducing the "Fairway Femme" ladies backpack, made with Vegan Leather from 100% recycled materials. With multiple colour options, this charming backpack adds an added touch of femininity and elegance to your everyday attire.



Large
Internal Storage
Pockets



RFID Lining
for added
Cyber Security



Cooling, Soft Mesh
Backing with
Hidden Storage
Pocket

Additional
personalization
position, perfect
for Initials!



HSBP104 | Ivory

Customization
Available



HSBP101 | Black



HATHWAY STEWART

CUSTOM DECORATION

CUSTOMIZATION



PREMIUM QUALITY AND SHORT LEAD-TIMES WITH OUR FLEXIBLE IN-HOUSE CUSTOM DECORATION SERVICE, USING INDUSTRY LEADING PRODUCTION EQUIPMENT & MATERIALS



**HATHWAY
STEWART**



CONTACT INFORMATION:

Hathway Stewart Enterprises Ltd.

E-mail: info@hathway-stewart.com

Phone: 647-529-2297

Address: 23 & 24 – 225 Hanlon Creek Blvd,
Guelph, ON, Canada, N1C 0A1

WEBSITE: www.hathway-stewart.com



**HATHWAY
STEWART**